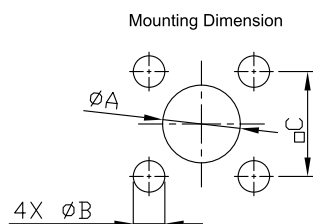
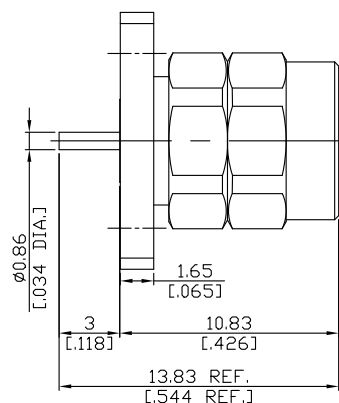
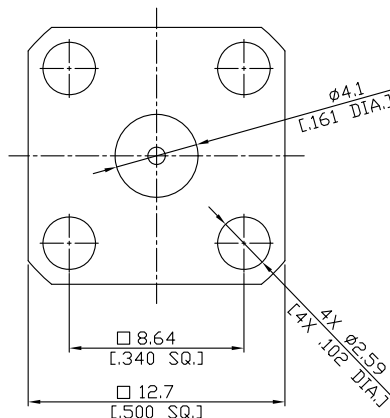


2.4mm Plug (Male) Connector Solder Attachment 4 Hole Flange Mount
Stub Terminal, 8.64mm (.340 inch) Hole Spacing DC-50GHz VSWR1.15

Q1GFA50-1383A / 9XX



	mm		inch	
	Max.	Min.	Max.	Min.
A	4.3	4.2	.169	.165
B	2.7	2.6	.106	.102
C	8.69	8.59	.342	.338



All dimensions are in mm [inch]

Tolerances according to DIN ISO 2768-mH

Interface

According to

IEC 61169-40, IEEE Std 287-2007

Mechanically compatible with

1.85mm

Electrical Data

Impedance

50 Ω

Frequency

DC to 50 GHz

VSWR (Return Loss)

≤ 1.15 (≥ 23.13 dB)

Insertion Loss

≤ 0.05 x √F (GHz) dB

Insulation Resistance

≥ 5 GΩ

Test Voltage

500 V rms

Working Voltage (at sea level)

150 V rms

-VSWR in application depends decisive on PCB layout or cavity design-

Material And Plating

Piece Parts	Material	Plating
Centre contact	Beryllium Copper	Gold plating, 3 μinch (Non-magnetic nickel-phosphorus underplating, 100 μinch)
Body	Stainless Steel	Passivated
Insulator	PEI/PTFE	
Gasket	Silicone Rubber	
Coupling nut	Stainless Steel	Passivated

2.4mm Plug (Male) Connector Solder Attachment 4 Hole Flange Mount
Stub Terminal, 8.64mm (.340 inch) Hole Spacing DC-50GHz VSWR1.15

Q1GFA50-1383A / 9XX

Mechanical Data

Coupling mechanisms	Screw-lock
Mating Cycles	≥ 500
Centre Contact	Soldered
Terminal Type	Stub
Captivated Type	Mechanical Captivation
Center contact captivation	≥ 20 N
Coupling test torque	1.65 Nm
Recommended torque	0.80 Nm to 1.10 Nm

Environmental Data

Temperature Range	-40°C to +85°C
Thermal shock	IEC 61169-1, Subclause 9.4.4
Corrosion	IEC 61169-1, Subclause 9.4.6
Vibration	IEC 61169-1, Subclause 9.3.3
Shock	IEC 61169-1, Subclause 9.3.14
Moisture Resistance	IEC 61169-1, Subclause 9.4.3
RoHS	compliant

Packing

Single or 100